

Isetta LX / ST

H 117

P 76 • 80

L 82 (4) • 118 (6R) • 135 (7R)

Gelato

TN	TB	TB/TN	TC	TC/TN	N
Chiller	Freezer	Dual Temp	Heated	Hot&Cold	Non-refrigerated

RS - Static	•				
RV - Ventilated					
RS/TC S - Static and Dry Heat convertible					
RV/TC S - Ventilated / Dry Heat convertible					
HUR - Meat					
CH - Chocolate					
TC S - Dry Heat					
TC BM - Bainmarie					
N - Non-refrigerated					

Installation

Plug-in

Temperature
-16/-14 °C

Refrigerant
R290

Refrigeration
Static

Compressor
Hermetic

Defrost
Electric

Climate class
7

Upper class
Tempered

Front glass
Tempered

Side glass
Tempered

Rear closing system
Tilting panel

Work top
White prepainted sheet

Lighting
Led 5700 K

Equipment handling
Swivel casters

Storage cell
Static refrigerated
with skin evaporator
(6R, 7R)

Installazione

Plug-in

Temperatura
-16/-14 °C

Refrigerante
R290

Refrigerazione
Statica

Compressore
Ermetico

Sbrinamento
Elettrico

Classe climatica
7

Vetro superiore
Temperato

Vetro frontale
Temperato

Vetri laterali
Temperato

Chiusura posteriore
Ribaltina basculante

Piano di servizio
Lamiere preverniciata bianca

Illuminazione
Led 5700 K

Movimentazione
Ruote pivotanti

Cella di riserva
Refrigerata statica con
evaporatore a mantello
(6R, 7R)



R290



LX



ST

Available colours - Colori disponibili

Internal
Interno

White

Front
Frontale

White

Sides
Fianchi

White

Isetta LX / ST

	4	6R	7R
	RS TB	RS TB	RS TB
External dimensions (LxDxH) Dimensioni esterne (LxPxH)	824 x 760 x 1176 mm	1184 x 800 x 1176 mm	1354 x 800 x 1176 mm
Capacity (gross / net) Capacità (lorda / netta)	-	-	-
Weight (net) Peso (netto)	69 kg	97 kg	102 kg
Refrigeration Refrigerazione		Static Statica	
Refrigerant Refrigerante		R290	
Climate class Classe climatica		7	
Operating conditions Condizioni ambientali		35 °C / 75 %RH	
Product temperature Temperatura prodotto		-16/ -14 °C	
Compressor (q.ty - type) Compressore (q.tà - tipologia)		1 Hermetic 1 - Ermetico	
Defrost Sbrinamento		Electric Elettrico	
Power supply Alimentazione		230 V / 1 Ph / 50 Hz	
Electrical input (nominal) Assorbimento elettrico (regime)	300 W / 2,4 A	590 W / 4,1 A	460 W / 2,6 A
Electrical input (defrost) Assorbimento elettrico (sbrinamento)		810 W / 3,8 A	

Technical sheet about models whit condensing unit included with air cooled
Dati tecnici riferiti a modelli con unità a bordo con condensazione ad aria





Item

Accessorio

White cone holder Portaconi completo bianco	•	•	•
Scoop washer with stainless steel container Lavaporzionatore vaschetta inox	•	•	•

Setup - Stainless steel containers

Allestimento - Vaschette gelato in Acciaio Inox

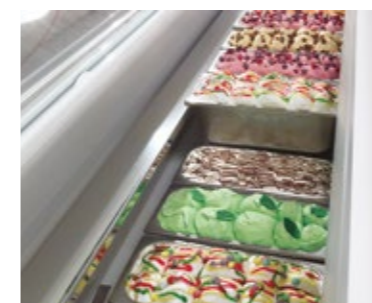
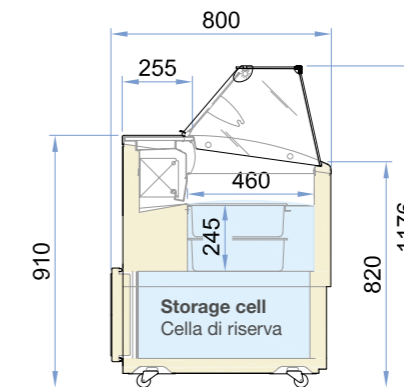
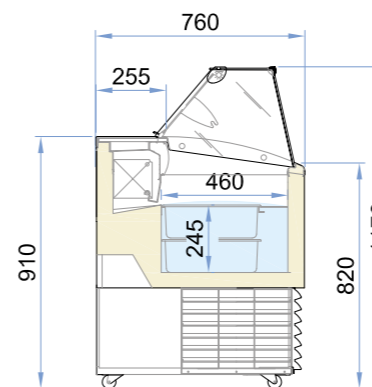
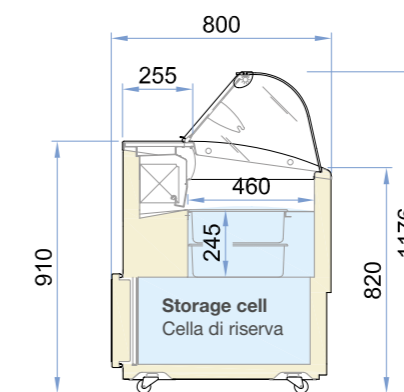
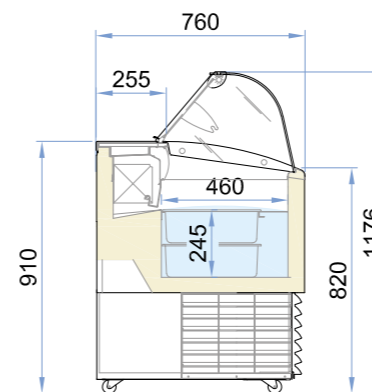
Display Vasca espositiva	4,75 Lt 260 x 157 x 170 h 	6	10	11
	5 Lt * 360 x 165 x 120 h 	4 + (4)	6 + (6)	7 + (7)
Storage cell Cella di riserva	4,75 Lt 260 x 157 x 170 h 	-	6	8
	5 Lt * 360 x 165 x 120 h 	-	4 + (4)	6 + (6)

* Piled up double row Doppia fila di riserva

Height Altezza	Length Lunghezza	Model type Tipo di banco	Total display area Superficie espositiva totale m ²	Temperature class Classe di temperatura	Recommended temperature Temperatura consigliata °C	Energy class Classe energetica	Energy efficiency index Indice di efficienza energetica EEI	Annual energy consumption Consumo annuo AEC kWh/A	Light source type and class Tipo e classe illuminazione
H117	82	IGF1	0,24	G3	-15°C	B	17,5	2.062	-
	118	GF2	0,36	G3	-15°C	B	18,9	2.475	-
	135	GF2	0,42	G3	-15°C	B	19,4	2.665	-

Configuration: air cooled plug in unit R290, polycarbonate tilting panel closure, led lighting.

Configurazione: motore a bordo ad aria R290, chiusura ribaltina basculante in policarbonato, illuminazione led.



Display - piled up double row - 5 Lt
Vasca espositiva - doppia fila di riserva - 5 Lt



Storage cell - mod.: 6R, 7R, 9R, 12R
Cella di riserva - mod.: 6R, 7R, 9R, 12R